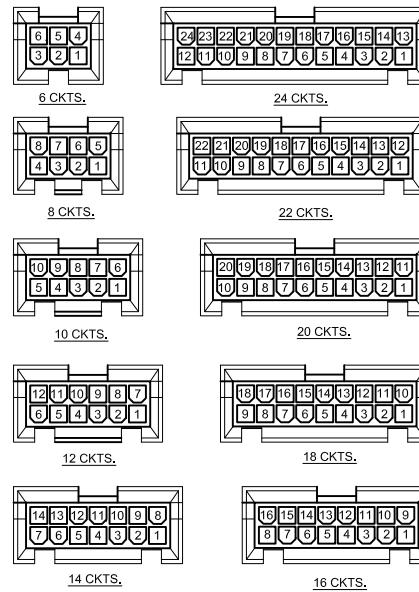


P.C.B LAYOUT



KEY HOLD CIRCUIT SIZE LAYOUT

■ Specifications :

- Voltage rating: 600V AC / DC
- Current rating: 9A AC / DC
- Withstanding voltage: 1500V AC/minute
- Temperature range: -25°C~+85°C
- Insulation resistance: ≥1000MΩ
- Contact resistance: ≤10mΩ
- After environmental testing: ≤20mΩ

9357 W R X-2*XX B-XX SN XX
① ②③④ ⑤ ⑥ ⑦ ⑧ ⑨

- ① Series No.
- ② Category: W-wafer
- ③ Welding Board Angle: R- Right Angle 90°
- ④ Welding Way: Blank-DIP
- ⑤ Row No.-Pin No.: 2*XX-2*03P~2*12P
- ⑥ Plug the Pin & Special No.:
B-Arrange ushering with positioning column
- ⑦ Material: N0-PA66 94V-0 ;N2-PA66 94V-2
- ⑧ Planting Category: SN-Bright tin plating ;
- ⑨ Color: Blank-natural color

Poles	Dimensions(mm)	
	A	B
2*03	8.40	19.20
2*04	12.60	23.40
2*05	16.80	27.60
2*06	21.00	31.80
2*07	25.20	36.00
2*08	29.40	40.20
2*09	33.60	44.40
2*10	37.80	48.60
2*11	42.00	52.80
2*12	46.20	57.00

9357WR-2*XXB-4TSN	Nylon 4T UL 94V-0	Brass	Tin-Plated	9357HM-B
9357WR-2*XXB-N0SN	Nylon 66 UL 94V-0			
9357WR-2*XXB-N2SN	Nylon 66 UL 94V-2			
PART NO	Material	Material(Pin)	Finish(Pin)	Mates With ADZL Housing

GENERAL TOLERANCE
.X ±0.30
.XX ±0.20
.XXX ±0.10

思量连接器有限公司
ADZL CONNECTORS CO.,LTD

PART NO.
9357WR-2*XXB-XXSN

TITLE
4.20mm Crimp Style Connectors

PROJECT

APPROVAL: Ken, CHECK: Wisely He, DRAWN: Allen, DATA: 2017/07/30

UNIT: MM, SCALE: 1:1, NUMBER: A-000, REV: D

DATE	OLD REV	NEW REV	ECN	DESCRIPTION	CHECK	APPROVAL

9357 W V X-2*XX B-XX SN XX

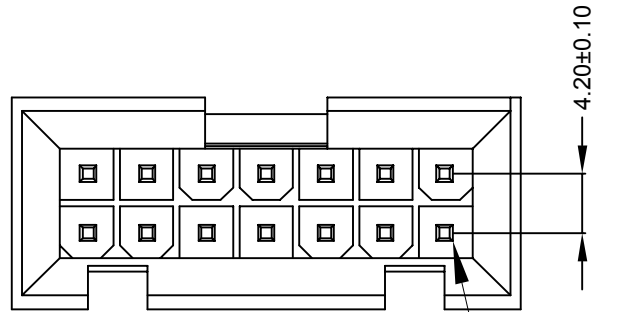
(01) (02) (03) (04) (05) (06) (07) (08) (09)

■ Specifications :

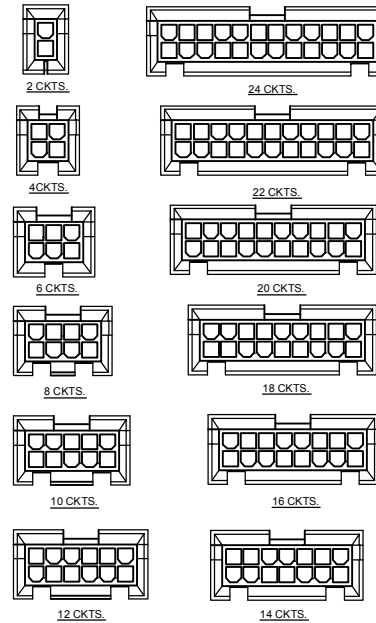
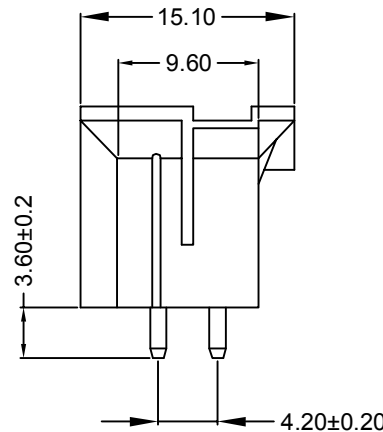
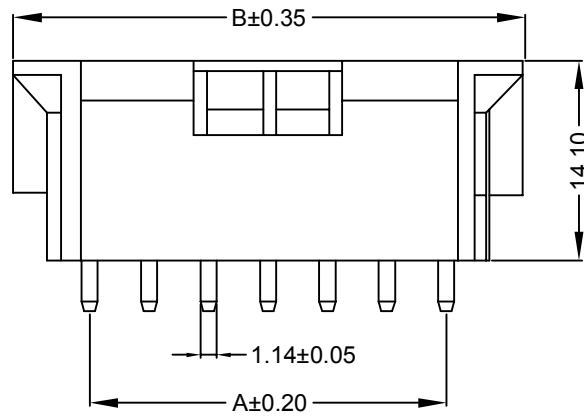
- Voltage rating: 600V AC / DC
- Current rating: 9A AC / DC
- Withstanding voltage: 1500V AC/minute
- Temperature range: -25°C~+85°C
- Insulation resistance: ≥1000MΩ
- Contact resistance: ≤10mΩ
- After environmental testing : ≤20mΩ

- (01) Series No.
- (02) Category : W-wafer
- (03) Welding Board Angle: V-180°
- (04) Welding Way: Blank-DIP ;
- (05) Row No.-Pin No.: 2*XX-Double row
- (06) Special NO.
- B-Arrange ushering with positioning column
- (07) Material : N0-PA66 94V-0 ; N2-PA66 94V-2
- (08) Planting Category:
V:All Gold-Plated ; G:Gold-Plated Contact
S-Silver Plating ; *01-Gold Flash ; *02-2u" ; *03-3u" ;
*05-5u" ; *10-10u" ; *15-15u" ; *30-30u" ; *50-50u"
N-Plating Nickel 30u" ; SN-Bright tin plating 70u"
SW-Fog Tin plating
- (09) Color : Blank-natural color

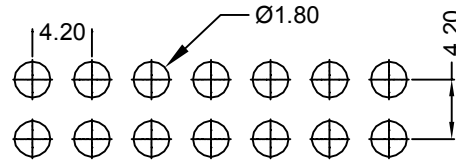
Poles	Dimensions(mm)	
	A	B
2*01	4.20	10.80
2*02	4.20	15.00
2*03	8.40	19.20
2*04	12.60	23.40
2*05	16.80	27.60
2*06	21.00	31.80
2*07	25.20	36.00
2*08	29.40	40.20
2*09	33.60	44.40
2*10	37.80	48.60
2*11	42.00	52.80
2*12	46.20	57.00



Circuit 1



KEY HOLD CIRCUIT SIZE LAYOUT



RECOMMENDED PCB LAYOUT

9357WV-2*XXB-N0SN	Nylon 66 UL 94V-0	Phorphos Bronze	Tin-Plated	9357HM-B
9357WV-2*XXB-N2SN	Nylon 66 UL 94V-2	Phorphos Bronze	Tin-Plated	9357HM-B
PART NO	Material	Material(Pin)	Finish(Pin)	Mates With ADZL Housing

GENERAL TOLERANCE
.X ±0.30
.XX ±0.20
.XXX ±0.10

 东莞市思量连接器有限公司
DONGGUAN ADZL CONNECTORS CO.,LTD

PART NO. 9357WV-2*XXB-XXSN

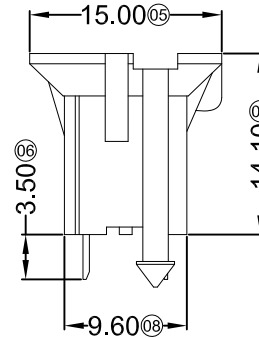
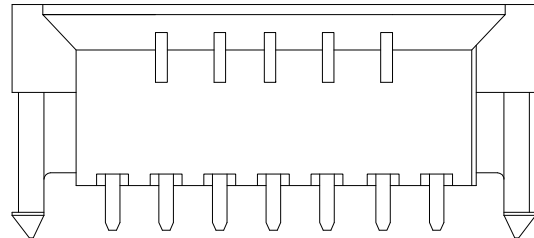
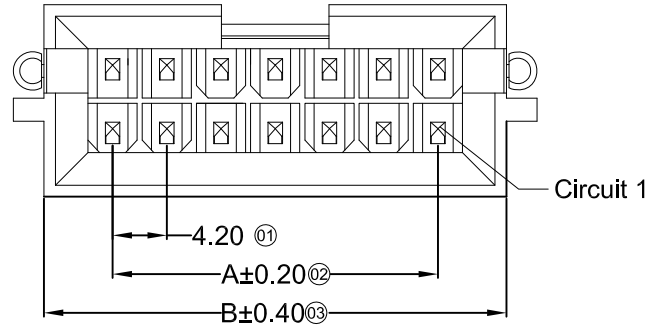
TITLE 4.20mm Crimp Style Connectors

PROJECT

APPROVAL	CHECK	DRAWN	DATA
Ken	Wisely He	Allen	2018/07/30

UNIT	SCALE	NUMBER	REV
MM	1:1	A-106	B

DATE	OLD REV	NEW REV	ECN	DESCRIPTION	CHECK	APPROVAL
1						



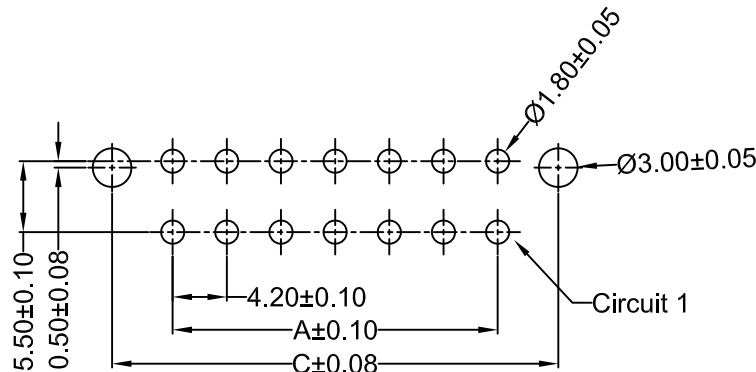
■ Specifications :

- Voltage rating: 600V AC / DC
- Current rating: 9A AC / DC
- Withstanding voltage: 1500V AC/minute
- Temperature range: -25°C~+85°C
- Insulation resistance: ≥1000MΩ
- Contact resistance: ≤10mΩ
- After environmental testing: ≤20mΩ

9357 W V X-2*XX HB-XX SN XX

① ② ③ ④ ⑤ ⑥ ⑦ ⑧ ⑨

- ① Series No.
- ② Category: W-wafer
- ③ Welding Board Angle: V- Straight 180°
- ④ Welding Way: Blank-DIP
- ⑤ Row No.-Pin No.: 2*XX-2*02P~2*12P
- ⑥ Plug the Pin & Special No.:
HB-The hollow needle with positioning column
arrange ushering
- ⑦ Material: N0-PA66 94V-0 ; N2-PA66 94V-2
- ⑧ Planting Category: SN-Bright tin plating ;
- ⑨ Color: Blank-natural color



P.C.B LAYOUT

Poles	Dimensions(mm)		Poles	Dimensions(mm)	
	A	B		A	B
2*02	4.20	15.10	2*08	29.40	40.30
2*03	8.40	19.30	2*09	33.60	44.50
2*04	12.60	23.50	2*10	37.80	48.70
2*05	16.80	27.70	2*11	42.00	52.90
2*06	21.00	31.90	2*12	46.20	57.10
2*07	25.20	36.10			

9357WV-2*XXHB-N0SN	Nylon 66 UL 94V-0	Brass	Tin-Plated	9357HM-B
9357WV-2*XXHB-N2SN	Nylon 66 UL 94V-2	Brass	Tin-Plated	9357HM-B
PART N0	Material	Material(Pin)	Finish(Pin)	Mates With ADZL Housing

DATE	OLD REV	NEW REV	ECN	DESCRIPTION	CHECK	APPROVAL
1						
2						
3						
4						

GENERAL TOLERANCE

.X	±0.30
.XX	±0.20
.XXX	±0.10



APPROVAL	CHECK	DRAWN	DATA
Ken	Wisely He	Allen	2017/08/31

PART NO. 9357WV-2*XXHB-XXSN			
TITLE 4.20 mm Crimp Style Connectors			
UNIT MM	SCALE 1:1	NUMBER A-106	REV D