

RIBBON CABLE
1.27mm PITCH

SECTION SHOWING
ASSY AFTER TERMINATION

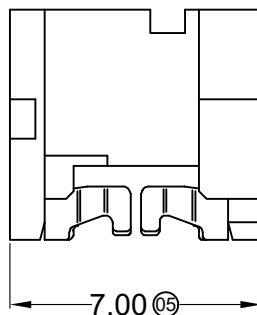
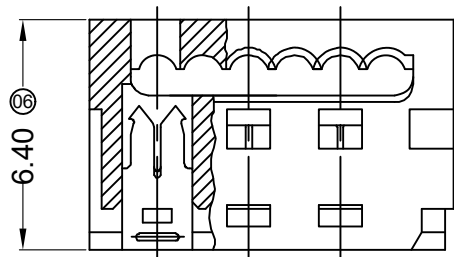
■ Specifications :

- Voltage rating: 250V AC / DC
- Current rating: 1.2A AC / DC
- Withstanding voltage: 1000V AC/minute
- Temperature range: -25°C~+85°C
- Insulation resistance: ≥1000MΩ
- Contact resistance: ≤10mΩ
- After environmental testing: ≤20mΩ

1273 H I-2*XX XX-PT XX

① ②③ ④ ⑤ ⑥ ⑦

- ① Series No.
- ② Category: H-HSG
- ③ Welding Board Angle: I-HSG+hardware
- ④ Row No.-Pin No.: 2*XX-2*02P~2*13P
- ⑤ Plug the Pin & special No.:
- ⑥ Material: PT-PBT UL 94V-0
- ⑦ Color: Blank-natural color



Poles	Dimensions(mm)		Poles	Dimensions(mm)	
	A	B		A	B
2*02	7.59	3.81	2*08	22.83	19.05
2*03	10.13	6.35	2*09	25.37	21.59
2*04	12.67	8.89	2*10	27.91	24.13
2*05	15.21	11.43	2*11	30.45	26.67
2*06	17.75	13.97	2*12	32.99	29.21
2*07	20.29	16.51	2*13	35.53	31.75

1273HI-2*XX-PT	PBT UL 94V-0	Phosphor Bronze	Tin-Plated
PART NO	Material	Material(Pin)	Finish(Pin)

DATE	OLD REV	NEW REV	ECN	DESCRIPTION	CHECK	APPROVAL

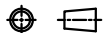
GENERAL TOLERANCE

.X ±0.30

.XX ±0.20

.XXX ±0.10

PROJECT




APPROVAL	CHECK	DRAWN	DATA
Ken	Zhao Hong	Allen	2018/10/15

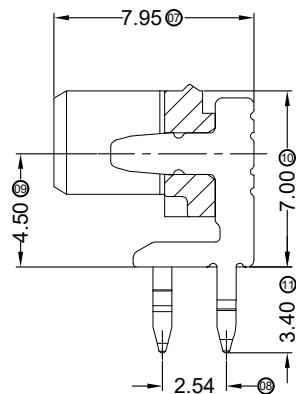
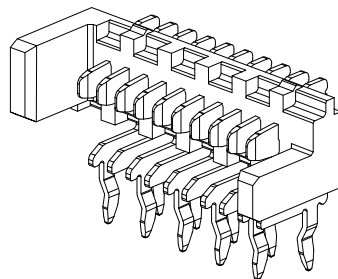
PART NO.			
1273HI-2*XX-PT			
TITLE			
1.27mm Crimp Style Connectors			
UNIT	SCALE	NUMBER	REV
MM	1:1		

Specifications :

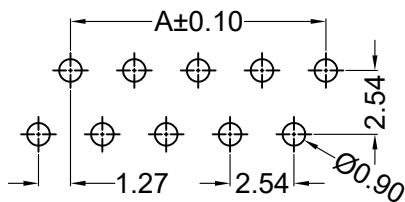
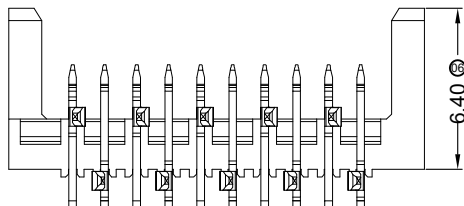
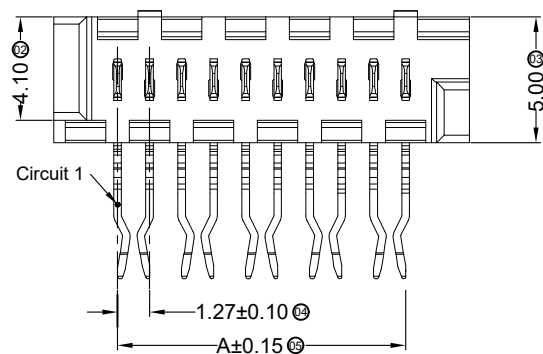
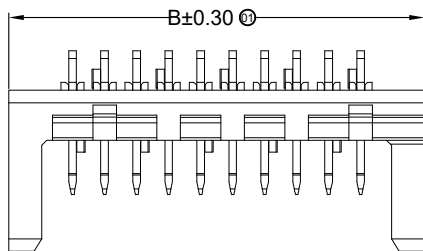
- Voltage rating: 500V AC / DC
- Current rating: 2A AC / DC
- Withstanding voltage: 500V AC/minute
- Temperature range: -25°C~+85°C
- Insulation resistance: ≥1000MΩ
- Contact resistance: ≤15mΩ
- After environmental testing: ≤20mΩ
- Mates With ADZL Housing 1273HI

1273 W R X-2*XX X- XT SN XX
 ① ② ③ ④ ⑤ ⑥ ⑦ ⑧ ⑨

- ① Series No.
- ② Category: W-wafer
- ③ Welding Board Angle: R- Right Angle 90°
- ④ Welding Way: Blank-DIP
- ⑤ Row No.-Pin No.: 2*XX-2*02P~2*13P
- ⑥ Plug the Pin & Special No.:
- ⑦ Material: 1T-PA10T 94V-0 ; 9T-PA9T 94V-0
- ⑧ Planting Category: SN-Brigh Tin plating
- ⑨ Color: Blank-natural color


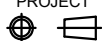


SECTION A-A
SCALE 1:1



Recommended P.C.B Layout
General Tolerance±0.05

Poles	Dimensions(mm)		Poles	Dimensions(mm)	
	A	B		A	B
2*02	3.81	8.89	2*08	19.05	24.10
2*03	6.35	11.40	2*09	21.59	26.64
2*04	8.89	13.94	2*10	24.13	29.18
2*05	11.43	16.48	2*11	26.67	31.72
2*06	13.97	19.02	2*12	29.21	34.26
2*07	16.51	21.56	2*13	31.75	36.77

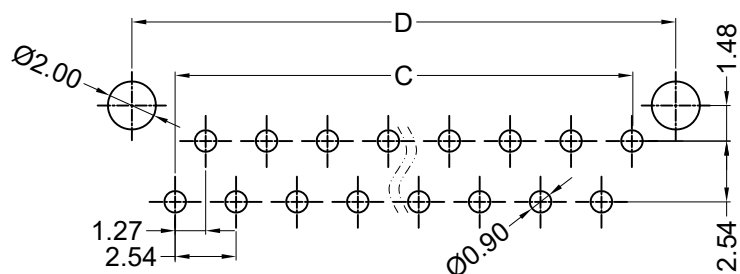
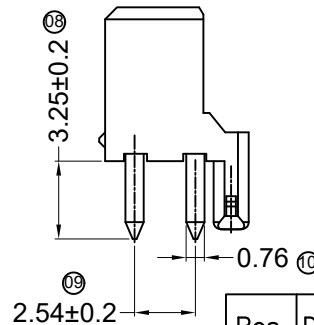
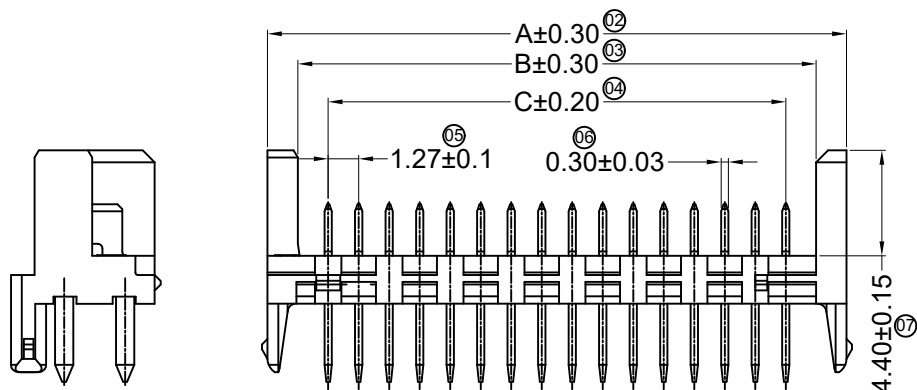
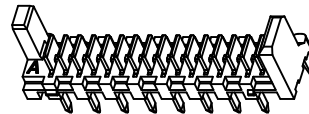
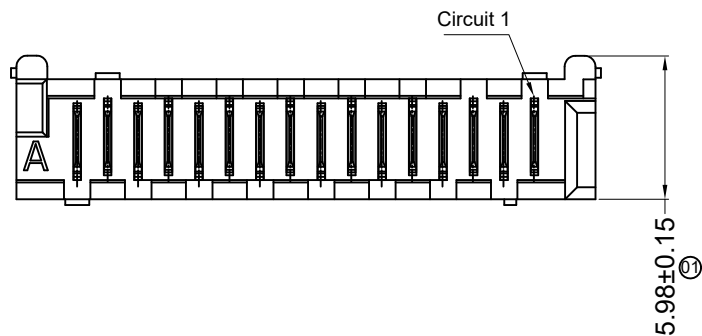
							GENERAL TOLERANCE .X ±0.30 .XX ±0.20 .XXX ±0.10	 东莞市思量连接器有限公司 DONGGUAN ADZL CONNECTORS CO.,LTD.				PART NO. 1273WR-2*XX-XTSN			
							PROJECT 					APPROVAL Ken	CHECK Zhao Hong	DRAWN Allen	DATA 2017/10/15
DATE	OLD REV	NEW REV	ECN	DESCRIPTION	CHECK	APPROVAL		UNIT MM	SCALE 1:1	NUMBER	REV				

Specifications :

- Current rating: 2A AC / DC
- Withstanding voltage: 500V AC/minute
- Temperature range: -25°C~+85°C
- Insulation resistance: ≥1000MΩ
- Contact resistance: ≤20mΩ
- After environmental testing: ≤30mΩ
- Mates With ADZL Housing 1273HI

1273 W V X - 2* X X - XT SN XX X
 ① ② ③ ④ ⑤ ⑥ ⑦ ⑧ ⑨ ⑩

- ① Series No.:
- ② Category: W-Wafer
- ③ Welding Board Angle: V-180°
- ④ Welding Way: Blank-DIP
S-SMT
- ⑤ Row No.-Pin No.: 2*-Double Rows
- ⑥ Plug the Pin & Special No.:
- ⑦ Material:
1T-PA10T 94V-0 ; 9T-PA9T 94V-0
- ⑧ Plating Category:
SN-Bright Tin Plating
- ⑨ Color: Blank-Natural Color
BK-Black
- ⑩ Packaging:
R-Tape Reel(With Cover)
G-Tube(Without Cover)



Recommended PCB Layout(Top Side)
(PCB Board Tolerance±0.05)

Pos	DIM A	DIM B	DIM C	DIM D	Pos	DIM A	DIM B	DIM C	DIM D
4	8.86	6.35	3.81	7.66	16	24.10	21.59	19.05	22.90
6	11.40	8.89	6.35	10.20	18	26.64	24.13	21.59	25.44
8	13.94	11.43	8.89	12.74	20	29.18	26.67	24.13	27.98
10	16.48	13.94	11.43	15.28	22	31.72	29.21	26.67	30.52
12	19.02	16.51	13.97	17.82	24	34.26	31.75	29.21	33.06
14	21.56	19.05	16.51	20.36	26	36.80	34.29	31.75	35.60

DATE	OLD REV	NEW REV	ECN	DESCRIPTION	CHECK	APPROVAL

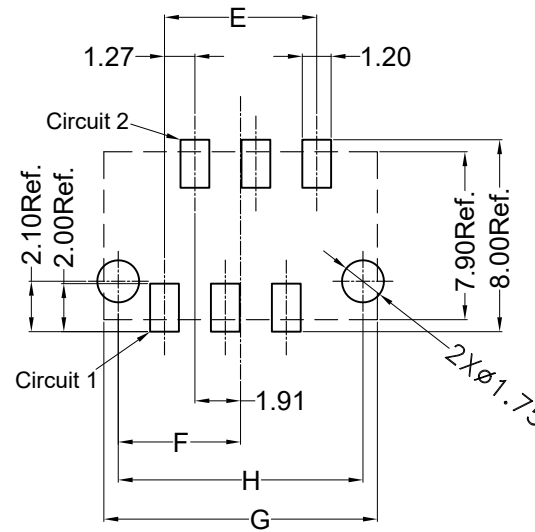
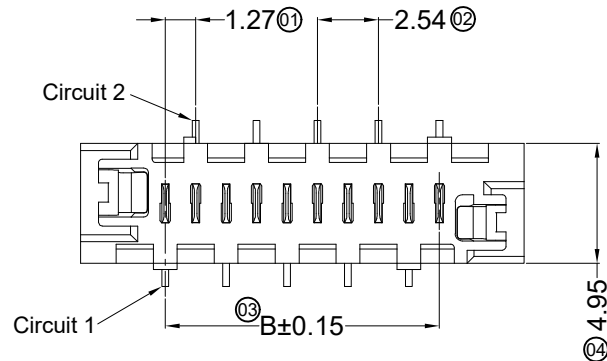
GENERAL TOLERANCE	
.X	±0.30
.XX	±0.20
.XXX	±0.10

PROJECT	
	

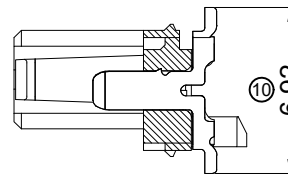
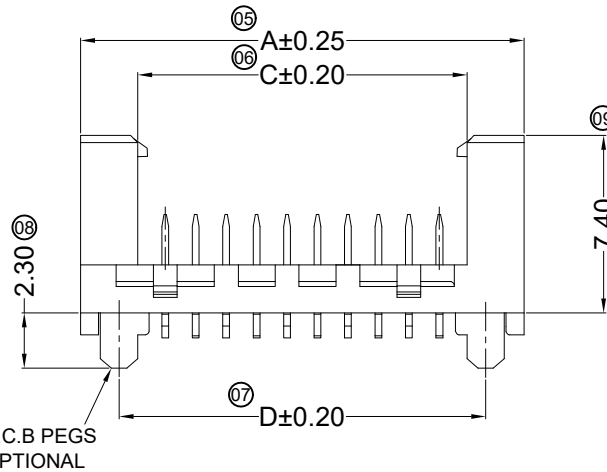
 东莞市思量连接器有限公司
DONGGUAN ADZL CONNECTORS CO.,LTD.

APPROVAL	CHECK	DRAWN	DATA
Ken	Zhao Hong	Allen	2022/09/01

PART NO.			
1273WV-2*XX-XTSNXXX			
TITLE			
1.27mm Vertical DIP Wafer Without Lock			
UNIT	SCALE	NUMBER	REV
MM	1 : 1		



P.C.B LAYOUT FOR CLEARANCE FIT WITH P.C.B PEGS
RECOMMENDED P.C.B THICKNESS 1.60±0.14



Specifications :

- Voltage rating: 500V AC / DC
- Current rating: 2A AC / DC
- Withstanding voltage: 500V AC/minute
- Temperature range: -25°C~+85°C
- Insulation resistance: ≥1000MΩ
- Contact resistance: ≤30mΩ
- After environmental testing: ≤40mΩ
- Mates With ADZL Housing 1273HI

1273 W V S - 2*XX A - XT XXX XX

(1) (2) (3) (4) (5) (6) (7) (8) (9)

- (1) Series No.
- (2) Category: W-wafer
- (3) Welding Board Angle: V-180°
- (4) Welding Way: S-SMT
- (5) Row No.-Pin No.: 2*XX-Double
- (6) Plug the Pin & Special NO.: A-With card buckle
- (7) Material: 1T-PA10T 94V-0 ; 9T-PA9T 94V-0
- (8) Planting Category:

V: All Gold-Plated

G: Gold-Plated Contact

*01-Gold Flash ; *02-2u" ; *03-3u"

*05-5u" ; *10-10u" ; *15-15u" ;

SN-Bright tin plating 70-120u"

SN1-Bright tin plating 120u"Min.

SW-Fog Tin plating

HS-High temperature Tin

(9) Color:

Blank-natural color

Poles	Dimensions(mm)							
	A	B	C	D	E	F	H	G
04	10.86	3.81	6.11	7.66	3.81	3.83	7.66	8.86
06	13.40	6.35	8.65	10.20	6.35	5.10	10.20	11.40
08	15.94	8.89	11.19	12.74	8.89	6.37	12.74	13.94
10	18.48	11.43	13.73	15.28	11.43	7.64	15.28	16.48
12	21.02	13.97	16.27	17.82	13.97	8.91	17.82	19.02
14	23.56	16.51	18.81	20.36	16.51	10.18	20.36	21.56
16	26.10	19.05	21.35	22.90	19.05	11.45	22.90	24.10
18	28.64	21.59	23.89	25.44	21.59	12.72	25.44	26.64
20	31.18	24.13	26.43	27.98	24.13	13.99	27.98	29.18
22	33.72	26.67	28.97	30.52	26.67	15.26	30.52	31.72
24	36.26	29.21	31.51	33.06	29.21	16.53	33.06	34.26
26	38.80	31.75	34.05	35.60	31.75	17.80	35.60	36.80

GENERAL TOLERANCE
.X ±0.30
.XX ±0.20
.XXX ±0.10

东莞市思量连接器有限公司
DONGGUAN ADZL CONNECTORS CO.,LTD.

APPROVAL CHECK DRAWN DATA

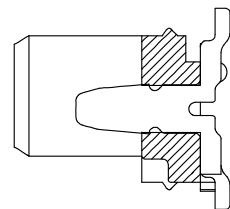
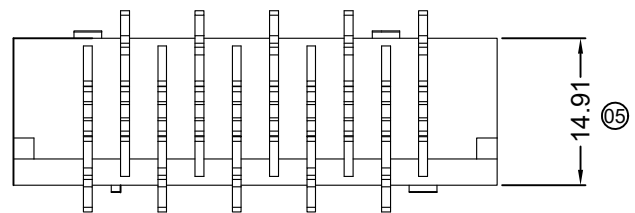
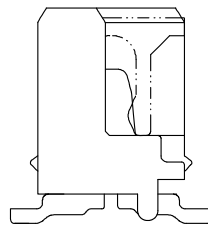
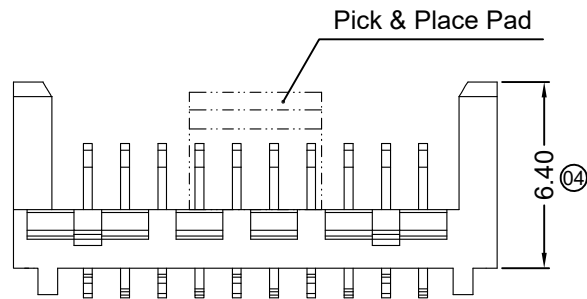
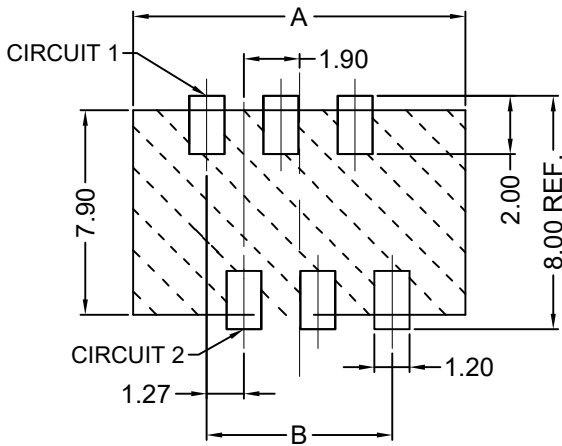
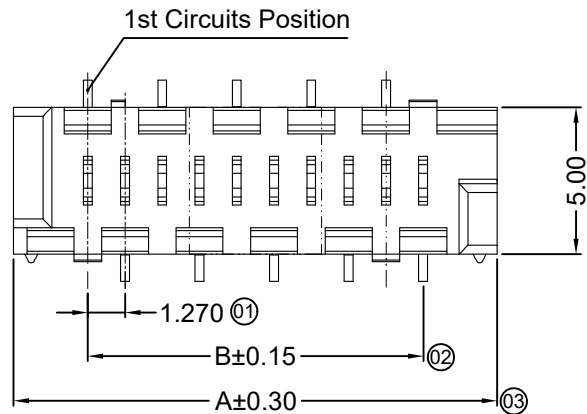
Ken Zhao Hong Allen 2017/10/15

PART NO. 1273WVS-2*XXA-XTXXX

TITLE 1.27mm Crimp Style Connectors

UNIT	SCALE	NUMBER	REV
MM	1:1		

DATE	OLD REV	NEW REV	ECN	DESCRIPTION	CHECK	APPROVAL	PROJECT



■ Specifications :

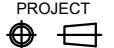
- Voltage rating: 500V AC / DC
- Current rating: 2A AC / DC
- Withstanding voltage: 500V AC/minute
- Temperature range: -25°C~+85°C
- Insulation resistance: ≥1000MΩ
- Contact resistance: ≤15mΩ
- Mates With ADZL Housing 1273HI

1273 W V S-2*XX B- XT SN XX
 ① ② ③ ④ ⑤ ⑥ ⑦ ⑧ ⑨

- ① Series No.
- ② Category: W-wafer
- ③ Welding Board Angle: V- Straight 180°
- ④ Welding Way: S-SMT
- ⑤ Row No.-Pin No.: 2*XX-2*02P~2*13P
- ⑥ Plug the Pin & Special No.: B-Without Post
- ⑦ Material: 1T-PA10T 94V-0 ; 9T-PA9T 94V-0
- ⑧ Planting Category: SN-Bright tin plating
- ⑨ Color: Blank-Natural Color

Circuit	Dimension		Circuit	Dimension	
	A	B		A	B
04	8.89	3.81	16	24.10	19.05
06	11.40	6.35	18	26.64	21.59
08	13.94	8.89	20	29.18	24.13
10	16.48	11.43	22	31.72	26.67
12	19.02	13.97	24	34.26	29.21
14	21.56	16.51	26	36.77	31.72

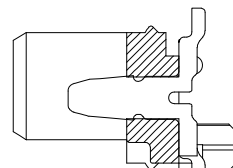
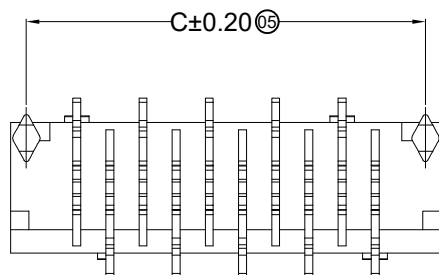
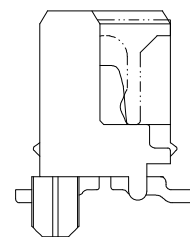
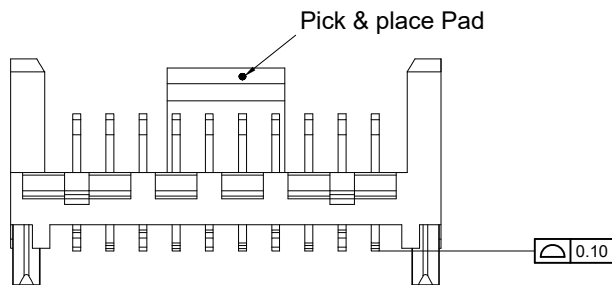
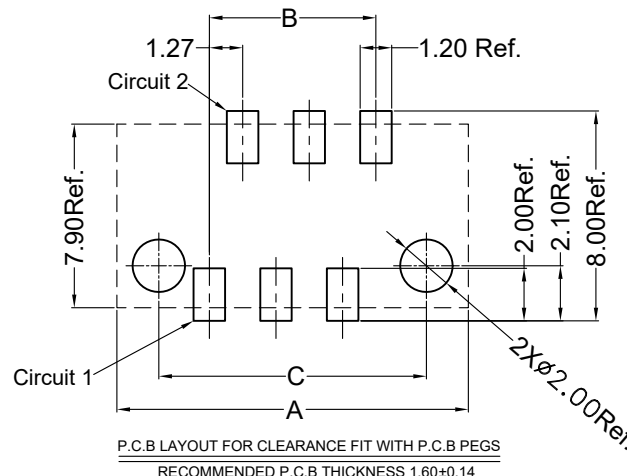
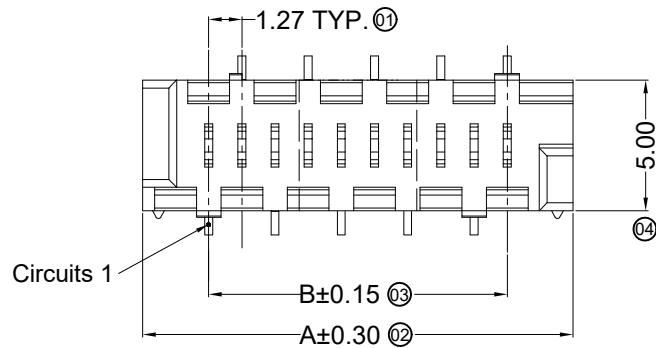
DATE	OLD REV	NEW REV	ECN	DESCRIPTION	CHECK	APPROVAL

GENERAL TOLERANCE	
.X	±0.30
.XX	±0.20
.XXX	±0.10
PROJECT	

ADZL 东莞市思量连接器有限公司
 DONGGUAN ADZL CONNECTORS CO.,LTD.

APPROVAL	CHECK	DRAWN	DATA
Ken	Zhao Hong	Allen	2018/04/02

PART NO. 1273WVS-2*XXB-XTSN			
TITLE 1.00 mm Crimp Style Connectors			
UNIT MM	SCALE 1:1	NUMBER	REV



SECTION A-A
SCALE 1 : 1

■ Specifications :

- Voltage rating: 500V AC / DC
- Current rating: 2A AC / DC
- Withstanding voltage: 500V AC/minute
- Temperature range: -25°C~+85°C
- Insulation resistance: ≥1000MΩ
- Contact resistance: ≤15mΩ
- After environmental testing: ≤20mΩ
- Mates With ADZL Housing 1273HI

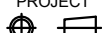
1273 W V S-2*XX X- XT SN XX
① ② ③ ④ ⑤ ⑥ ⑦ ⑧ ⑨

- ① Series No.
- ② Category: W-wafer
- ③ Welding Board Angle: V- Straight 180°
- ④ Welding Way: S-SMT
- ⑤ Row No.-Pin No.: 2*XX-2*02P~2*13P
- ⑥ Plug the Pin & Special No.:
- ⑦ Material: 1T-PA10T 94V-0 ; 9T-PA9T 94V-0
- ⑧ Planting Category: SN-Bright tin plating
- ⑨ Color: Blank-Natural Color

Poles	Dimensions(mm)		
	A	B	C
2*02	8.89	3.81	7.66
2*03	11.40	6.35	10.20
2*04	13.94	8.89	12.74
2*05	16.48	11.43	15.28
2*06	19.02	13.97	17.82
2*07	21.56	16.51	20.36
2*08	24.10	19.05	22.90
2*09	26.64	21.59	25.44
2*10	29.18	24.13	27.98
2*11	31.72	26.67	30.52
2*12	34.26	29.21	33.06
2*13	36.77	31.72	35.57

DATE	OLD REV	NEW REV	ECN	DESCRIPTION	CHECK	APPROVAL

GENERAL TOLERANCE	
.X	±0.30
.XX	±0.20
.XXX	±0.10

PROJECT


 东莞市思量连接器有限公司
DONGGUAN ADZL CONNECTORS CO.,LTD.

APPROVAL	CHECK	DRAWN	DATA
Ken	Zhao Hong	Allen	2017/10/15

PART NO.			
1273WVS-2*XX-XTSN			
TITLE			
1.27 mm Crimp Style Connectors			
UNIT	SCALE	NUMBER	REV
MM	1 : 1		